

User Manual Smart Panel WiFi

WSP-204-W-0x

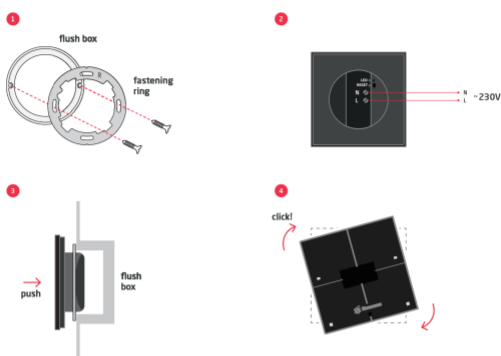
Replacing traditional wall switches, Grenton Smart Panel WiFi allows to control not only the light, but also any device in a smart home. The Panel provides information from sensors, system parameters or its functional data. The versatile and intuitive control interface makes it easy and quick to control an individual device or the whole home. The versatile and intuitive control interface makes it easy and quick to control an individual device or the whole home. It contains the Common Logic Unit (CLU) with WiFi wireless communication controller, executes the function of processing logic and storing the configuration.



1. Technical Data

Device power supply	230V _{ac}
Average power consumption	<1.0W
Maximal wire cross section	2,5mm ²
WiFi frequency band	2,4GHz
Weight	120g
Fixing	flush mounted box Ø 60mm
Dimensions (H/W/D)	surface part: 80/80/10mm, concealed part: Ø 50mm / depth: 22mm
Operating temperature range	0 to +45°C

2. Wiring diagram



3. Wireless communication configuration

The brand new device on power up starts with the AP (access point) SSID: CLU47xxxxxxx [reset] with the factory password (PIN) "00000000". After connection setup with the AP please connect to the device http server using web browser and <http://192.168.4.1> link. Next please set up a PIN and a WiFi network parameters, the WiFi network the device is meant to be connected to. The PIN is the new AP password and the

"Secret Key" used by the Object Manager tool during the discovery process as well. In case of connection failure with the previously configured WiFi network Smart Panel starts with the AP SSID: CLU47xxxxxxx after 2 minutes of unsuccessful retries. After 10 minutes from the power on the AP is deactivated and the Smart Panel only keeps trying to connect to the configured WiFi network.

WiFi Setup

PIN:

SSID:

Password:

4. Restoring Factory Settings

Restoring Factory Settings initiates the RESET button hold over 5 seconds. Reset to

the factory is indicated by the LED with stops blinking and turns on steady light.

5. Warnings and Cautionary Statements



ATTENTION I

- Before proceeding with the assembly, read the installation schematics and full instructions available at www.grenton.com. Failure to follow the guidelines contained in the instructions and other requirements of due care valid as a result of the nature of the equipment (device) may be dangerous to life / health, damage the device or installation to which it is connected, damage other property or violate other applicable regulations. The manufacturer of the device, Grenton Sp. z o. o. does not bear any responsibility



DANGER I

- Danger to life caused by electric current!
- The components of the installation (individual devices) are designed to work in a home

for the damage (property and non-property related) resulting from the assembly and / or use of the equipment not in accordance with the instructions and / or due diligence in handling the equipment (device).

- Device power supply, permissible load or other characteristic parameters have to be in accordance with the device specification, described in particular in the "Technical data" section.
- The product is not intended for children and animals.
- If you have technical questions or comments about the device operation, contact Grenton Technical Support.
- Answers to frequently asked questions can be found at: www.support.grenton.pl

electrical installation or directly in its vicinity. Incorrect connection or use may cause a fire or electric shock.

- All work related to the installation of the device, in particular works involving interference in the electrical installation, may be performed only by a person with appropriate qualifications or licences.
- When installing the device, make sure that the power supply voltage is disconnected from the circuit in which the device is connected or near which the assembly takes place.

6. CE Marking

The manufacturer declares that the device is in full compliance with the requirements of EU legislation that includes the directives of a new approach appropriate for this equipment. In particular, Grenton Sp. z o. o. declares that the device fulfills the requirements on safety, specified by law, and that it conforms to the na-

tional regulations that implement the appropriate directives: The Directive on the electromagnetic compatibility (EMC - 2014/30/UE) and the Directive on the limitation of the use of specific substances in electrical and electronic equipment (RoHS II - 2011/65/UE).



7. Warranty

Warranty available at: www.grenton.com/warranty

8. Manufacturer Contact Details

Grenton Sp. z o.o.
ul. Na Wierchowinach 3
30-222 Kraków, Poland
www.grenton.com