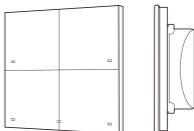


# User Manual Touch Panel 4B

TPA-204/404/604/804/904-T-0x

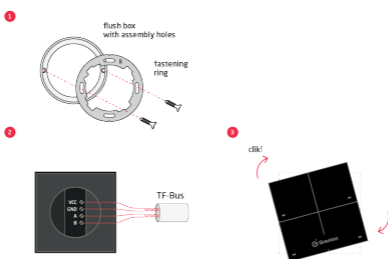
Surface mounted 4 buttons (touchpads) panel equipped with temperature sensor.



## 1. Technical data

|                             |  |
|-----------------------------|--|
| Device power supply         | 5-24V <sub>dc</sub>  |
| Maximal power consumption   | 0,17W  |
| Maximal device current      | 7mA (@24V)   |
| Maximal wire cross section  | 1,5mm <sup>2</sup>   |
| Weight                      | 114g   |
| Fixing                      | flush mounted box Ø 60mm                                       |
| Dimensions (H/W/D)          | surface part: 80/80/10mm, concealed part: Ø 50mm / depth: 22mm |
| Operating temperature range | 0 - 45°C (glass or aluminium)<br>10 - 35°C (wood or leather)   |
| Humidity range              | 40 - 70% (wood or leather)                                     |

## 2. Wiring diagram



|     |                            |
|-----|----------------------------|
| VCC | power supply signal        |
| GND | power supply ground signal |
| A   | TF-BUS A signal            |
| B   | TF-BUS B signal            |

## 3. Warnings and Cautionary Statements



### ATTENTION I

- Before proceeding with the assembly, read the installation schematics and full instructions available at [www.grenton.com](http://www.grenton.com). Failure to follow the guidelines contained in the instructions and other requirements of due care valid as a result of the nature of the equipment (device) may be dangerous to life / health, damage the device or installation to which it is connected, damage other property or violate other applicable regulations. The manufacturer of the device, Grenton Sp. z o.o. does not bear any responsibility

for the damage (property and non-property related) resulting from the assembly and / or use of the equipment not in accordance with the instructions and / or due diligence in handling the equipment (device).

- Device power supply, permissible load or other characteristic parameters have to be in accordance with the device specification, described in particular in the "Technical data" section.
- The product is not intended for children and animals.
- If you have technical questions or comments about the device operation, contact Grenton Technical Support.
- Answers to frequently asked questions can be found at: [www.support.grenton.com](http://www.support.grenton.com)



### DANGER I

- Danger to life caused by electric current!
- The components of the installation (individual devices) are designed to work in a home

electrical installation or directly in its vicinity. Incorrect connection or use may cause a fire or electric shock.

- All work related to the installation of the device, in particular works involving interference in the electrical installation, may be performed only by a person with appropriate qualifications or licences.
- When installing the device, make sure that the power supply voltage is disconnected from the circuit in which the device is connected or near which the assembly takes place.

## 4. CE Marking

The manufacturer declares that the device is in full compliance with the requirements of EU legislation that includes the directives of a new approach appropriate for this equipment. In particular, Grenton Sp. z o.o. declares that the device fulfills the requirements on safety, specified by law, and that it conforms to the national

regulations that implement the appropriate directives: The Directive on the electromagnetic compatibility (EMC - 2014/30/UE) and the Directive on the limitation of the use of specific substances in electrical and electronic equipment (RoHS II - 2011/65/UE).



## 5. Warranty

Warranty available at: [www.grenton.com/warranty](http://www.grenton.com/warranty)

## 6. Manufacturer Contact Details

Grenton Sp. z o.o.  
ul. Na Wierzchowinach 3  
30-222 Kraków, Poland  
[www.grenton.com](http://www.grenton.com)